

EFD 10 1p



Specifications

ETI Code	002540001
Description	EFD 10 1p
Weight	63
Level	Fuse bases and disconnectors
Mountaing	DIN
Pole number	1p
Product group	LV-fuse-switch disconnectors
Rated AC voltage	690V
Rated current	32A
Size	EFD10
Type	EFD 10 1p
Utilization category	AC22B

Online product page [🔗](#)

Other documentation



CE declaration

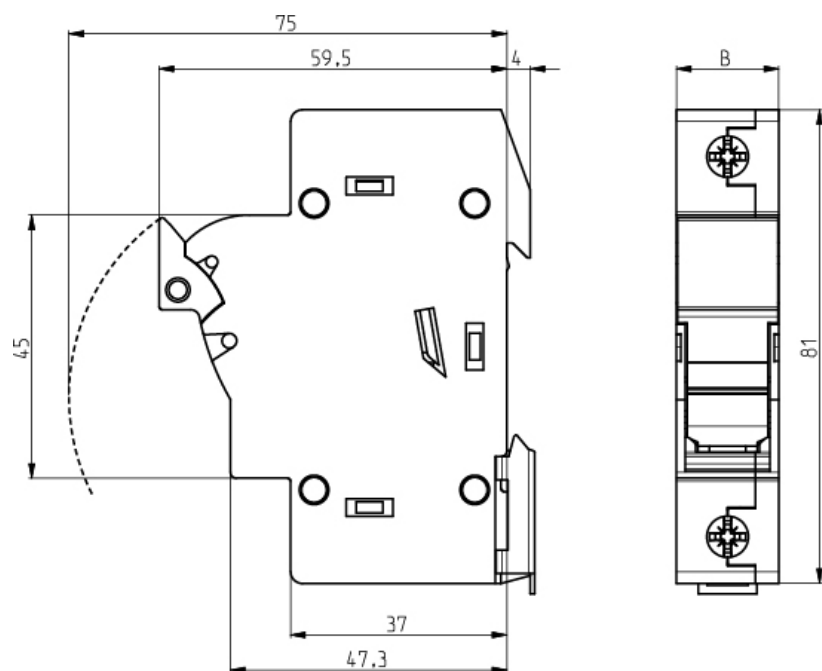
Technical data catalogue



ETIM international specifications

Number of poles	1
For fuse size	10x38 mm

Dimension drawing



	B
EFD 8, 10 1p	17,5
EFD 8, 10 1p+N	35
EFD 8, 10 2p	35
EFD 8, 10 3p	52,5
EFD 8, 10 3p+N	70