

EFD 10 3p



Specifications

ETI Code	002540004
Description	EFD 10 3p
Weight	184
Level	Fuse bases and disconnectors
Mountaing	DIN
Pole number	3p
Product group	LV-fuse-switch disconnecter
Rated AC voltage	690V
Rated current	32A
Size	EFD10
Type	EFD 10 3p
Utilization category	AC22B

Online product page 

Other documentation



CE declaration

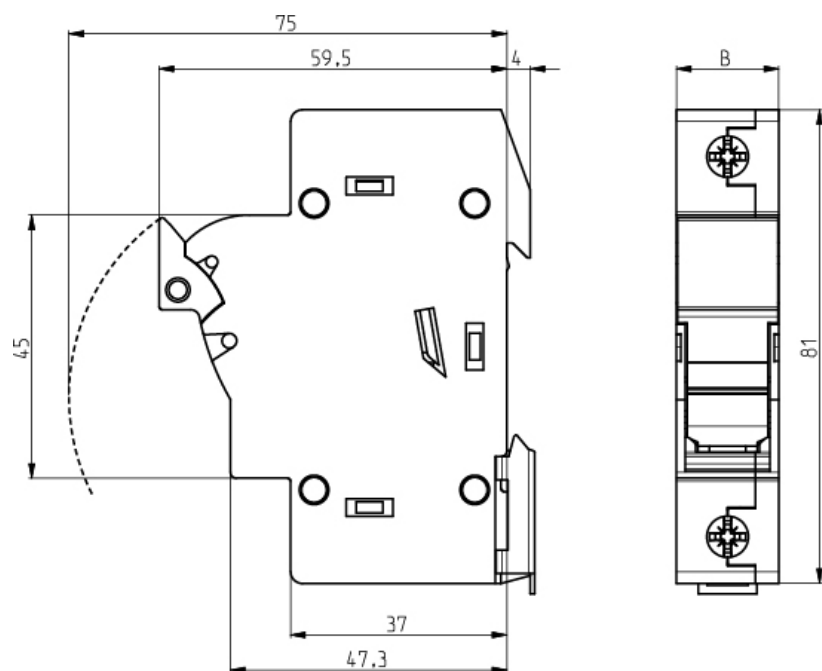
Technical data catalogue



ETIM international specifications

Number of poles	3
For fuse size	10x38 mm

Dimension drawing



	B
EFD 8, 10 1p	17,5
EFD 8, 10 1p+N	35
EFD 8, 10 2p	35
EFD 8, 10 3p	52,5
EFD 8, 10 3p+N	70