

INTERLOCKED SWITCH SOCKET OUTLETS



REFERENCE STANDARDS

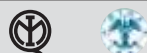
EN 60309-1

Plugs, socket outlets and couplers for industrial purposes.
Part 1: general requirements.

EN 60309-2

Plugs, socket outlets and couplers for industrial purposes.
Part 2: dimensional interchangeability requirements for pin and contact-tube accessories of harmonised configurations.

QUALITY MARKS



VERSIONS

	Without fuse carrier
	With fuse carrier
	With fuse carrier - HD
	With DIN rail (6 modules)
	With DIN rail (6 modules) - HD

TECHNICAL CHARACTERISTICS

Rated current:	16A-32A-63A
Rated voltage:	100÷690V~
Frequency:	c.c. - 50÷500Hz
Insulating voltage:	500/690V~
Protection degree:	IP44-IP66/IP67
Operating temperature according to the reference standard:	-25°C +40°C
Max. operating temperature:	60°C
Glow Wire test:	650°C/850°C
Material:	Engineering plastic
IK degree at 20°C:	IK07
Cable inlets:	Metric
Fuse-carriers:	gG 10,3x38mm (16-32A) Neozed type D02 (63A)
Colour:	Standard socket Grey RAL 7035 front side and smoke-grey plate Heavy Duty socket Blue RAL 5015 front side and dark-grey RAL 7004 body

BEHAVIOUR WITH CHEMICAL AND ATMOSPHERIC AGENTS - STANDARD SOCKET

Saline solution	Acids		Bases		Solvents				Mineral oil	UV rays
	Concentrated	Diluted	Concentrated	Diluted	Hexane	Benzol	Acetone	Alcohol		
Resiste	Resistenza limitata	Resiste	Resistenza limitata	Resiste	Non Resiste	Non Resiste	Non Resiste	Resistenza limitata	Resiste	Resiste

BEHAVIOUR WITH CHEMICAL AND ATMOSPHERIC AGENTS - HD SOCKET

Saline solution	Acids		Bases		Solvents				Mineral oil	UV rays
	Concentrated	Diluted	Concentrated	Diluted	Hexane	Benzol	Acetone	Alcohol		
Resiste	Resistenza limitata	Resiste	Resistenza limitata	Resiste	Resiste	Resistenza limitata	Non Resiste	Resiste	Resiste	Resiste

WIRING AND INSTALLATION

Wiring capacity of the terminals

Cross-section of the connectable conductors (mm²)

Rated current (A)	Socket outlets	
	Min	Max
16A	1,5	4
32A	2,5	10
63A	6	25

APPLICATION EXAMPLES



CABLE INLETS



Compact version 16A and 32A

1 M25 threaded on upper side
2 marks for M20 on lower side
1 mark on the back

Provided with cable gland M25



Large version 16A and 32A

1 M25 threaded on upper side
3 marks for M20-M32 on lower side
1 mark on the back

Provided with cable gland M25



Large version 63A

1 M40 threaded on upper side
3 marks for M20-M32 on lower side
1 mark on the back

Provided with cable gland M40

TECHNICAL DATA SWITCH DISCONNECTORS

				With fuse		Without fuse			
				16A	32A	16A	32A	63A	
Rated insulation voltage Ui			Vac	690	690	690	690	690	
			Vdc	600	600	600	600	-	
Rated impulse withstand voltage Uimp			kV	4	4	4	4	8	
Thermal current Ith			A	25	32	30	40	63	
Thermal current Ithe			A	25	32	30	40	63	
Nominal current rating IEC	AC21A	Resistite loads, including moderate overloads	400V	A	-	-	-	-	
			500V	A	-	-	-	-	
			690V	A	25	32	30	32	63
	AC22A	Mixed resistite and inductive loads, including moderate overloads	400V	A	-	-	-	-	-
			500V	A	-	-	-	-	-
			690V	A	30	32	20	32	63
	AC23A	Switching off motor loads or other highly inductive loads (3 phase/3 pole)	400V	A	-	-	20	32	50
			500V	A	-	-	-	-	40
			690V	A	16	25	16	25	30
	AC3	Squirrel-cage motor: starting, switching off motor during running (3 phase/ 3 pole)	400V	A	-	28,5	-	28,5	40
			690V	A	12	20	12	20	25
	DC21A	Resistite loads, including Moderate overloads	300V	A	25	32	25	32	-
	DC22A	Mixed resistite and inductive loads, including moderate overloads	250V	A	20	32	20	32	-
			600V	A	-	-	10(*)	10(*)	-
Rated short-time withstand current Icw (1s)			A	400	400	400	400	1500	
Short-circuit protection:	Conditional short-circuit current		kA	10	10	10	10	10	
	Associate fuse size for conditional short-circuit current - Type gG		500V	kA	16	32	16	32	63
	Rated short-circuit making capacity Icm		kA	1500	1500	1500	1500	2850	
UL rating	General use single phase and 3 phase		600V	A	20	30	32	40	63
	AC motor starting break all line single phase	120V	Hp	1,5	2	1,5	2	3	
		240V	Hp	3	5	3	5	7,5	
	AC motor B, C, D starting break all lines three phase	240V	Hp	7,5	10	7,5	10	10	
		480V	Hp	10	15	10	15	20	
Permissible wire range	Flexible wire	mm²	1.5-10	1.5-10	1.5-10	1.5-10	10-35		
		AWG	16-8	16-8	16-8	16-8	10-2		
	Rigid wire	mm²	1.5-16	1.5-16	1.5-16	1.5-16	10-35		
		AWG	16-8	16-8	16-8	16-8	10-2		

(*) 2+2 poles in series

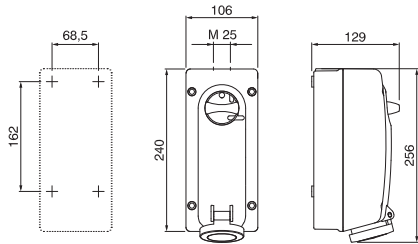
IMQ approved

UL approved

DIMENSIONS

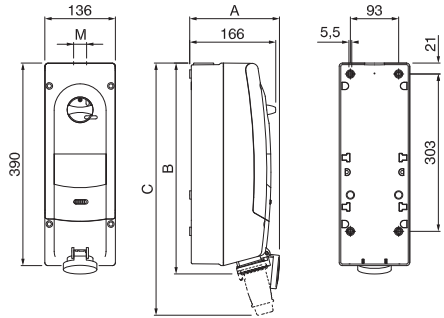
COMPACT VERSION - IP44

	A	B	C
2P+E 16A	140	256	335
3P+E 16A	146	256	341
3P+N+E 16A	157	256	355
2P+E 32A	158	267	364
3P+E 32A	158	267	364
3P+N+E 32A	158	265	370



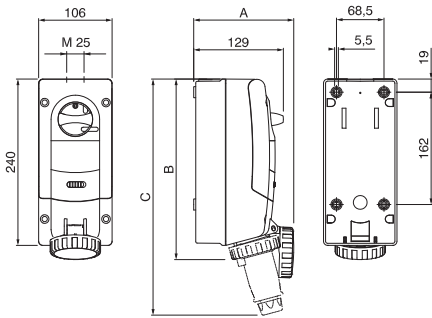
LARGE VERSION - IP44

	A	B	C	M
2P+E 16A	166	406	486	25
3P+E 16A	180	406	492	25
3P+N+E 16A	190	406	506	25
2P+E 32A	199	416	513	25
3P+E 32A	199	416	513	25
3P+N+E 32A	199	419	519	25



COMPACT VERSION - IP66/IP67

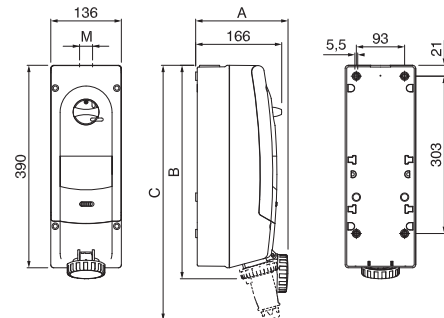
	A	B	C
2P+E 16A	145	261	341
3P+E 16A	152	261	350
3P+N+E 16A	163	262	368
2P+E 32A	164	272	377
3P+E 32A	164	272	377
3P+N+E 32A	167	272	385



(Dimension in mm)

LARGE VERSION - IP66/IP67

	A	B	C	M
2P+E 16A	166	412	492	25
3P+E 16A	186	412	500	25
3P+N+E 16A	197	412	518	25
2P+E 32A	205	420	526	25
3P+E 32A	205	420	526	25
3P+N+E 32A	207	420	533	25
63A	211	439	610	40



(Dimension in mm)

INTERLOCKED SWITCH SOCKET OUTLETS



VERSIONS

	Version with safety transformer compact (module 106) SELV transformer 230/24V
	Version with safety transformer large (module 136) SELV transformer 230/24V
	Version with RAIL DIN 6 modules compact (module 106)

REFERENCE STANDARDS

EN 60309-1

Plugs, socket outlets and couples for industrial purposes.
Part 1: general requirements.

EN 60309-2

Plugs, socket outlets and couples for industrial purposes.
Part 2: dimensional interchangeability requirements for pin and contact-tube accessories of harmonised configurations.

QUALITY MARKS



TECHNICAL CHARACTERISTICS

Rated current:	16A-32A
Rated voltage:	20÷50V~
Frequency:	c.c. - 50÷60Hz
SELV transformer 220/24V:	150VA
Insulating voltage:	500/690V~
Protection degree:	IP44-IP66/IP67
Operating temperature according to the reference standard:	-25°C +40°C
Max operating temperature:	60°C
Glow Wire test:	650°C/850°C
Material:	Engineering plastic
IK degree at 20°C:	IK07
Cable inlets:	Metric
Fuse-carriers:	gG 10,3x38mm
Colour:	Standard socket Grey RAL 7035 front side and smoke-grey plate Heavy duty socket Blue RAL 5015 front side and dark Grey RAL 7004 body

BEHAVIOUR WITH CHEMICAL AND ATMOSPHERIC AGENTS - STANDARD SOCKET

Saline solution	Acids		Bases		Solvents				Mineral oil	UV rays
	Concentrated	Diluted	Concentrated	Diluted	Hexane	Benzol	Acetone	Alcohol		
Resistant	Limited Resistance	Resistant	Limited Resistance	Resistant	Not Resistant	Not Resistant	Not Resistant	Limited Resistance	Resistant	Resistant

BEHAVIOUR WITH CHEMICAL AND ATMOSPHERIC AGENTS - HD SOCKET

Saline solution	Acids		Bases		Solvents				Mineral oil	UV rays
	Concentrated	Diluted	Concentrated	Diluted	Hexane	Benzol	Acetone	Alcohol		
Resistant	Limited Resistance	Resistant	Limited Resistance	Resistant	Resistant	Limited Resistance	Not Resistant	Resistant	Resistant	Resistant

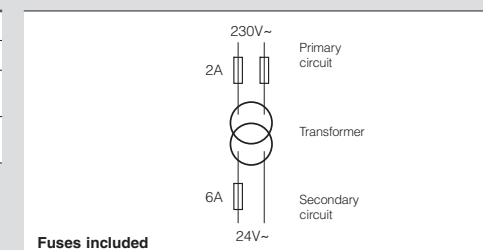
WIRING AND INSTALLATION

Wiring capacity of the terminals

Cross-section of the connectable conductors (mm²)

Rated current (A)	Socket outlets	
	Min	Max
16A	4	4
32A	4	10

PROTECTIONS FOR THE VERSION WITH TRANSFORMER



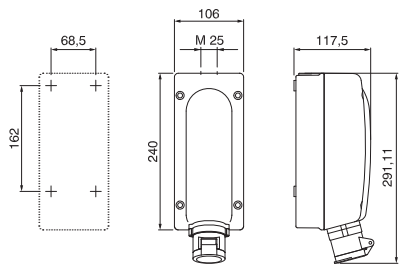
APPLICATION EXAMPLES



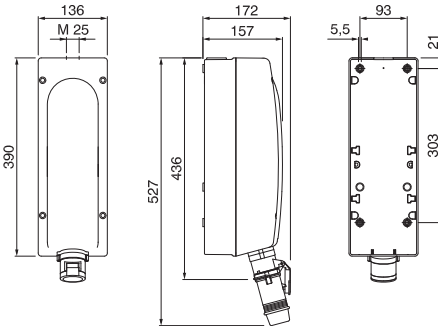
DIMENSIONS

CATALOGUE SECTION: 1.2

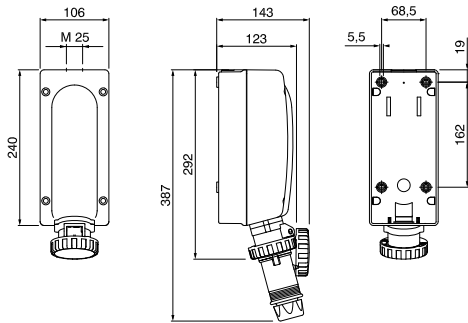
COMPACT VERSION - IP44



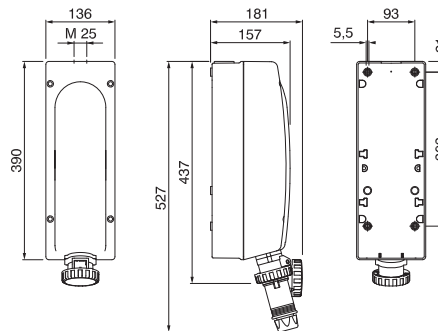
LARGE VERSION - IP44



COMPACT VERSION - IP66/IP67



LARGE VERSION - IP66/IP67



MODULAR SYSTEM



VERSIONS

	Modular bases - Standard - Heavy duty
	One module enclosure with cut-out - Standard
	Enclosure with plain lid - Standard - Heavy duty
	Consumer unit - Standard - Heavy duty

REFERENCE STANDARDS

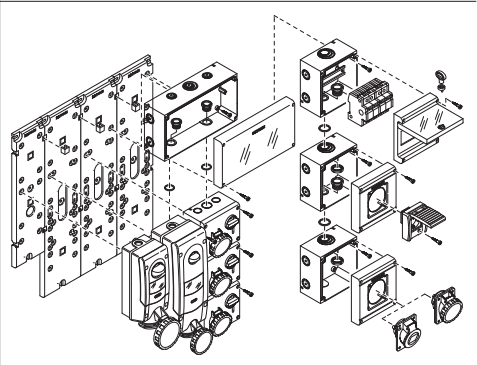
EN 60670-1 Boxes and enclosures for electrical accessories for household and similar fixed electrical installations. <i>Part 1: general requirements.</i>
CEI 23-49 Enclosure for accessories for household and similar fixed electrical installations. <i>Part 2: particular requirements for enclosures for protection devices and accessories dissipating a considerable power in normal use.</i>

QUALITY MARKS



TECHNICAL CHARACTERISTICS

Protection degree:	IP66
Operating temperature according to the reference standard:	-25°C +35°C
Max operating temperature:	60°C
Dissipable power according to the reference standard:	8-17W
Glow wire test:	650°C/850°C
Cable inlets:	Metric
Material:	Engineering plastic
IK degree at 20°C:	IK07
Colour:	Grey RAL 7035 (standard) Grey RAL 7004 (Heavy duty)
Total insulation	Yes



BEHAVIOUR WITH CHEMICAL AND ATMOSPHERIC AGENTS - STANDARD SYSTEM

Saline solution	Acids		Bases		Solvents				Mineral oil	UV rays
	Concentrated	Diluted	Concentrated	Diluted	Hexane	Benzol	Acetone	Alcohol		
Resistant	Limited Resistance	Resistant	Limited Resistance	Resistant	Not Resistant	Not Resistant	Not Resistant	Limited Resistance	Resistant	Resistant

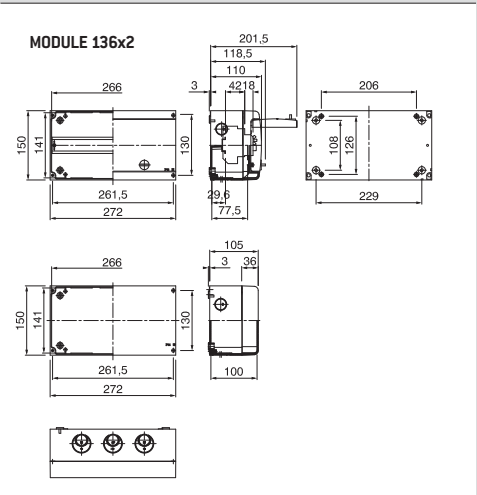
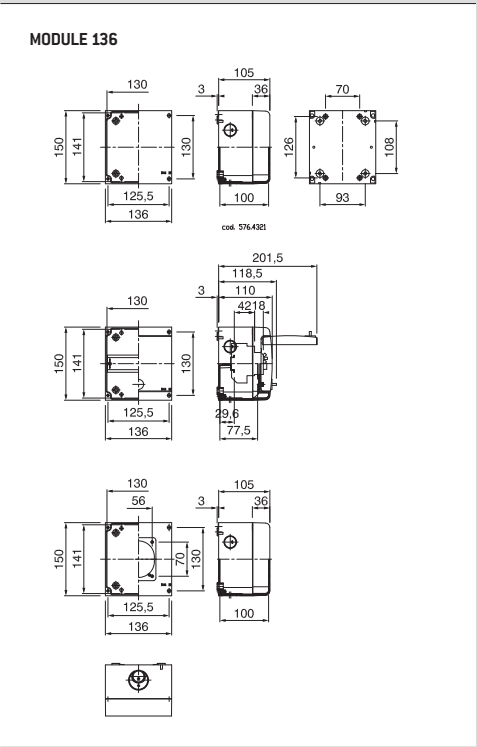
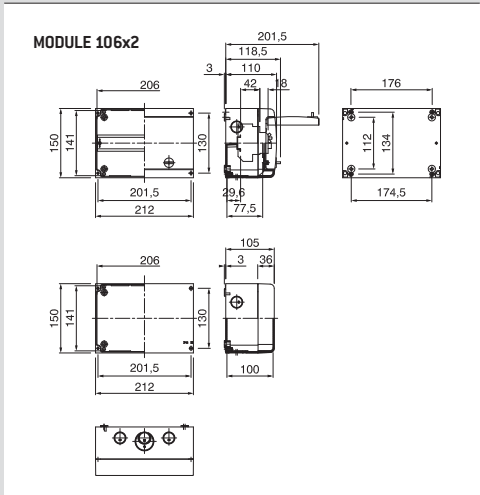
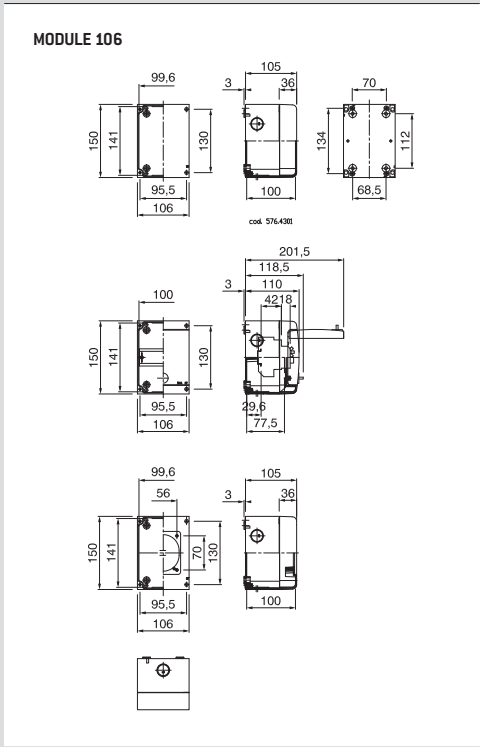
BEHAVIOUR WITH CHEMICAL AND ATMOSPHERIC AGENTS - HD SYSTEM

Saline solution	Acids		Bases		Solvents				Mineral oil	UV rays
	Concentrated	Diluted	Concentrated	Diluted	Hexane	Benzol	Acetone	Alcohol		
Resistant	Limited Resistance	Resistant	Limited Resistance	Resistant	Resistant	Limited Resistance	Not Resistant	Resistant	Resistant	Resistant

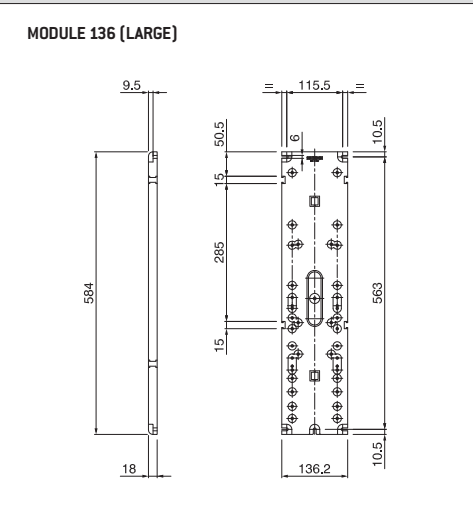
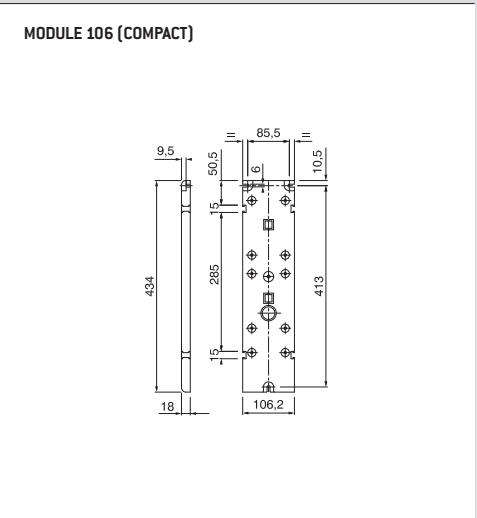
APPLICATION EXAMPLES



DIMENSIONS - JUNCTION BOXES



DIMENSIONS - MODULAR BASES



(Dimension in mm)

COMBINATIONS

		Junction box	With ADVANCE2 compact	With ADVANCE2 large	Different combinations with Advance2 and Omnia socket outlets	
MODULE 106	COMPACT					
	LARGE					
MODULE 136						

(Dimension in mm)