

SOCKETS FOR DOMESTIC APPLICATIONS



REFERENCE STANDARDS

CEI 23-50
Plugs and socket-outlets for household and similar purposes.
Part 1: general requirements.

QUALITY MARKS



TECHNICAL CHARACTERISTICS

VERSIONS

	Panel mounting flange 50x60mm IP54.
	Panel mounting flange 70x87mm IP54.
	Surface mounting flange 70x87mm IP54.

Rated current:	16A
Rated voltage:	250V~
Frequency:	50Hz
Insulating voltage:	690V~
Protection degree:	IP44 closed cover/IP54
Operating temperature according to the reference standard:	-25°C +35°C
Max. operating temperature:	60°C
Glow Wire test:	650°C/750°C
Material:	Engineering plastic
Cabling capacity of the terminals:	1,5mm²÷2x2,5 mm²

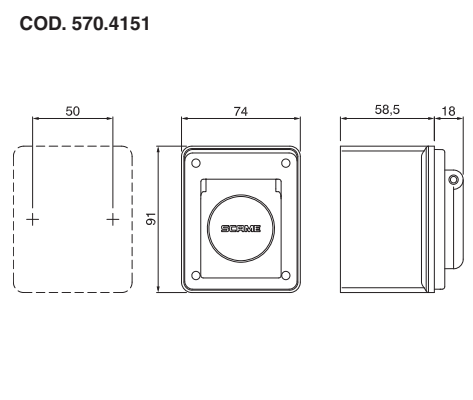
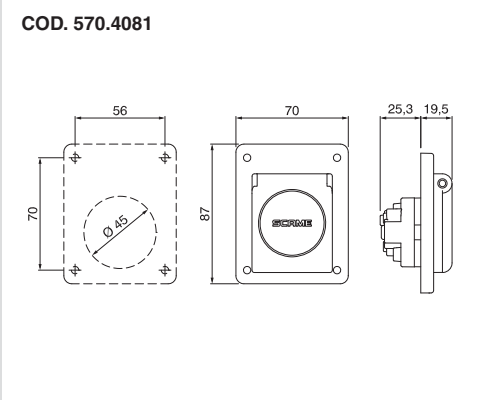
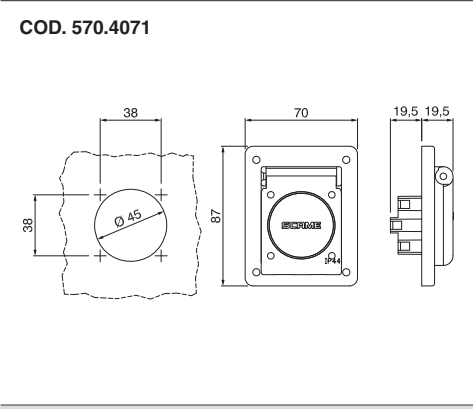
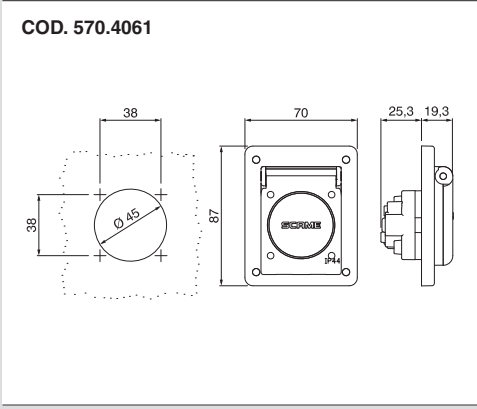
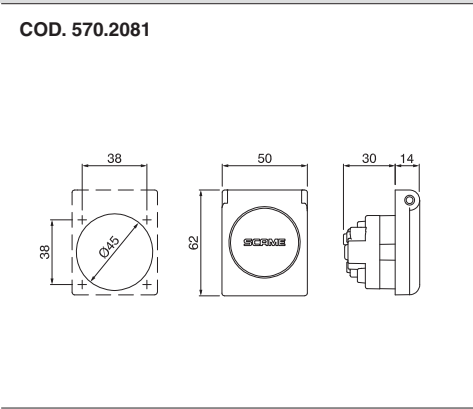
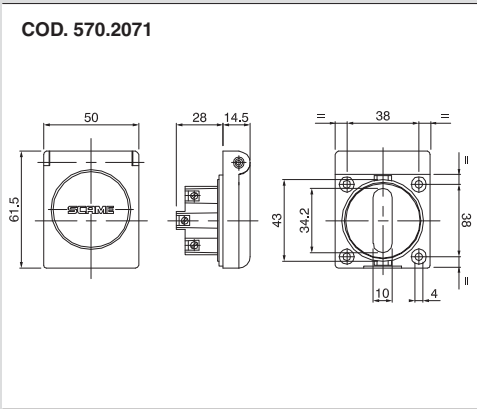
AVAILABLE STANDARDS

ITALIAN STANDARD P17/11 - 16A Shuttered socket CEI 23-50	ITALIAN STANDARD P30 - 16A Shuttered socket CEI 23-50	PLURISTANDARD 16A Shuttered socket	FRENCH STANDARD - 16A Shuttered socket NFC 61-314	ARGENTINIAN STANDARD - 10A Unshuttered socket IRAM 2071	BRAZILIAN STANDARD - 10A Unshuttered socket ABNT NBR 14136:2002

BEHAVIOUR WITH CHEMICAL AND ATMOSPHERIC AGENTS

Saline solution	Acids		Bases		Solvents				Mineral oil	UV rays
	Concentrated	Diluted	Concentrated	Diluted	Hexane	Benzol	Acetone	Alcohol		
Resistant	Not Resistant	Not Resistant	Limited Resistance	Resistant	Not Resistant	Not Resistant	Not Resistant	Limited Resistance	Resistant	Resistant

DIMENSIONS



(Dimensions in mm)