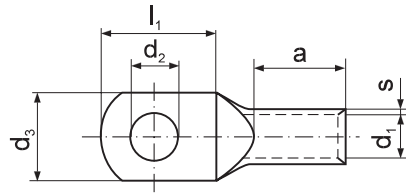


for single- and multi-wire Al cables

ARC Tubular terminal

Material: aluminum



Cross section mm ²	For screw M	d ₂ [mm]	Symbol	s [mm]	d ₁ [mm]	d ₃ [mm]	l ₁ [mm]	a [mm]	Weight [g/pce]	Unit [pcs]	Dies discriminant	Crimping tools
16	6	6,4	ARC 16	2	5,2	16	18	23	5,27	20	9	R50, PR95A (Doesn't apply to 16 mm ²), + as below
25	8	8,4	ARC 25	2	6,4	20	23	26	7,60	20	10	
35	8	8,4	ARC 35	2,2	7,6	20	23	28	10,14	10	12	
50	10	10,5	ARC 50	2,4	9,2	24	27	34	15,40	10	14	
70	10	10,5	ARC 70	2,5	10,6	26	27	40	19,70	10	16	
95	10	10,5	ARC 95	2,6	12,8	26	27	43	26,60	10	18	
120	12	13	ARC 120	2,7	14,3	28	30	52	35,40	10	20	EPZC300, EPZ300, GZ300, HRZ300, PRZ240, G0300, GU300, HR300, PR240
150	16	17	ARC 150	2,9	16,2	34	33	55	45,28	1	22	EPZC300, EPZ300,
185	16	17	ARC 185	3,1	17,8	38	37	60	59,10	1	23	GZ300, HRZ300,
240	16	17	ARC 240	4	20,2	40	40	64	95,00	1	28	G0300, GU300, HR300

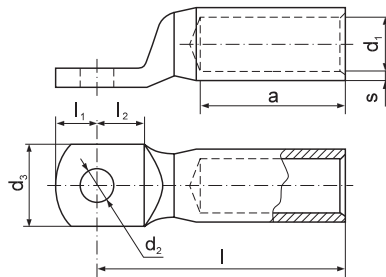
Production on request. - Terminals of dimensions other than in chart.

for single- and multi-wire Al cables

AS Tight terminal

Material: aluminum

According to DIN 46329



Cross section [mm ²]	For screw M	d ₂ [mm]	Symbol	s [mm]	d ₁ [mm]	d ₃ [mm]	l ₁ [mm]	l ₂ [mm]	l [mm]	a [mm]	Dies discriminant	Crimping tools
25	8	8,4	AS 8-16*	3,2	5,6	25	10	15,5	50	30	12	R50 + as below
35	8	8,4	AS 8-25	2,6	6,8	25	10	15,5	50	30	12	
50	8	8,4	AS 8-35	3	8	25	10	15,5	62	42	14	
70	10	10,5	AS 10-50	3,1	9,8	25	12	15,5	62	42	16	
95	10	10,5	AS 10-70	3,65	11,2	25	12	15,5	72	52	18	EPZC300, EPZ300, GZ300, HRZ300, PRZ240, G0300, GU300, HR300, GU120, HR100-U, PR240, PR95A
120	10	10,5	AS 10-95	4,4	13,2	25	12	15,5	80*	56	22	
150	12	13	AS 12-120	4,15	14,7	30	13	20	80	56	22	PR240 + as below
185	12	13	AS 12-150	4,35	16,3	30	13	20	90	60	25	
240	12	13	AS 12-185	5,1	18,3	30	13	20	91	60	28	
300	12	13	AS 12-240	5,5	21	38	13	24	103	70	32	EPZC300, EPZ300, GZ300, HRZ300, G0300, GU300, HR300
300	16	17	AS 16-300	5,35	23,3	38	16	24	103	70	34	
400	16	17	AS 16-400	6,25	26	38	24	24	116	73	39	GU625
500	20	21	AS 20-500	7,5	29	44	24	24	122	79	44	
625	20	21	AS 20-625*	8,5	33	52	24	24	130	85	52	

* outside DIN standard

se- single-strand sector wire

rm – multi-strand round wire

sm – multi-strand sector wire

Terminals of dimensions other than in chart on request.

Connectors with contact paste on request - indicate such. AS 8-16-P.